

October 2022

Dear WFM Supporters,

I have been a fan of the Women's Foundation of Montana (WFM) for a long time, so I am thrilled to be serving as WFM's new Advisory Committee Chair. I know I am part of a large community of WFM supporters, and I want to thank you for how you've championed our work and helped fund some of the most effective and inspiring organizations in Montana.

My first introduction to WFM was when I attended a presentation about the wage gap. It stands out as a pivotal moment for me. I learned about wage disparity issues and the steps women should take to negotiate a higher wage. As a result, I have made a practice of always negotiating my wage and encouraging others to do the same.

Later, I earned my master's degree in social work and have dedicated myself to learning about and addressing the variety of systemic injustices faced by people today. And I know we, as a community, could be doing much more to address barriers to equity for women and girls in Montana, especially for indigenous women and women of color.

Since I joined the WFM Advisory Committee six months ago, I've witnessed this incredible group of women dig into the issues that women in Montana are facing every day. We are working to sharpen our focus on how we can truly make an impact on issues around equity and economic empowerment for women.

We're listening to community leaders and organizations who are sharing concerns around rising inflation, access and affordability of childcare, Missing and Murdered Indigenous Women (MMIW), LGBTQIA+ issues, women's health and reproductive rights, and so much more. We've made significant commitments to a handful of new projects and are excited to share more about one of those projects with you in this newsletter.

I am so excited to be a part of this community - to be reflective and intentional, working alongside you to better the lives of women and girls. We can't wait to share more of our vision with you soon.

Thank you so much for your support!

Take care,



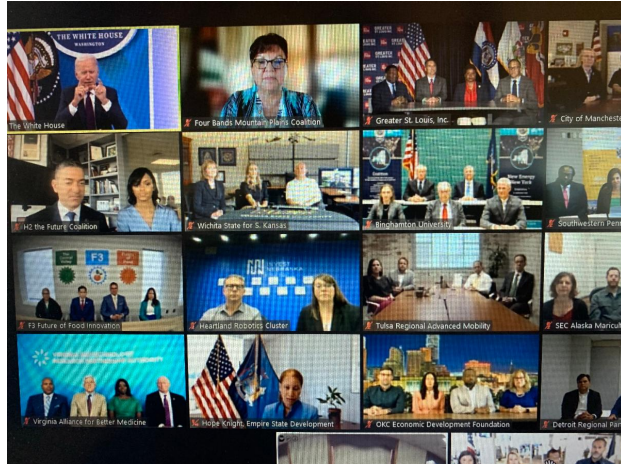
Amy Allison Thompson  
Women's Foundation  
Advisory Committee Chair

Learn more about Amy [here](#)!

## Grantee Spotlight

### Mountain | Plains Regional Native Community Development Financial Institutions (CDFI) Coalition

WFM extends an enthusiastic congratulations to the **Mountain | Plains Regional Native CDFI Coalition**! The Coalition was recently awarded \$45 million in grants (funded by the **American Rescue Plan**) to grow the Indigenous finance sector and expand economic opportunity in Native American communities in Montana, South Dakota, Wyoming, and North Dakota.



WFM is excited to support the Coalition because of the role CDFIs play in supporting nonprofits, small businesses, and individuals in accessing the capital they need to create safe, equitable, and vibrant communities. What's more, the Mountain | Plains Regional Native CDFI Coalition's approach and philosophy are unique to Native Americans and Indigenous women leaders. The Coalition is composed entirely of Native nonprofit organizations and is led almost exclusively by Native women. WFM funding, which totals \$125,000 over 5 years, will support the Coalition's regional Indigenous finance industry growth plan, specifically supporting the Montana-based Coalition members and women's leadership. The Coalition's work will alter systemic barriers Indigenous communities face in accessing capital and will drive equitable growth strategies. We are thrilled the Coalition is receiving these resources and look forward to sharing more about their work with you in the months ahead.

Read the full press release [here](#).

## Major Notes

### Voter Information



Are you **registered** to vote? The 2022 mid-term election is a critical election for Montana women.

Wonder how to register? Here is everything you need to know to **register to vote** in Montana. The Montana Supreme Court released an opinion in September **reinstating Election Day voter registration** and blocking new voter identification requirements in

advance of this year's Nov. 8 general election. **Registrations before the close of polls on Election Day will be processed.**

Each election cycle, Montana Women Vote, a WFM grantee, publishes a Voter Guide focused on issues that impact women and families. This guide gives voters the information and tools needed to make informed decisions and head into the voting booth with confidence. The guide also provides important information and reminders about voting. **[View and download the guide here.](#)**

---

## Planning for Year-End Giving

Does this time of year have you thinking about the causes you care about and how to support them? Here's a quick guide to year-end giving as you make these important decisions.

1. Determine what cause or causes you want to support.

Are you feeling like you want to give back but don't know how? Or maybe you have a cause or several causes that are close to your heart and you can't decide which to support. Try using these five guiding questions to help you get started:

- What causes interest or excite you?
- What problems do you hope to see addressed?
- Is there an area where you have expertise or want to learn more?
- What opportunities have changed your life and should be available to more people?
- Is there a population of people you care most about supporting?

2. Give in a way that helps you meet your charitable and financial goals. Here is a list of giving options to consider:

- Donor Advised Funds - You can establish a Donor Advised Fund at MCF with a single gift that allows you to give to the causes you care about most. You will have the opportunity to name your fund and endow your fund to ensure it will honor your legacy.
- Gifts of cash, real estate, or appreciated stocks
- Charitable Trusts
- Charitable Gift Annuities
- Qualified Charitable Distributions from retirement accounts
- Beneficiary designations for life insurance policies, IRA accounts, and bank and brokerage accounts.

The Gift and Estate Planning team at the Montana Community Foundation, of which WFM is a component fund, is available to answer any questions and to work with you, your family, and your financial and legal advisors as you consider the best ways to structure your charitable giving. Please call (406) 443-8313 or email **[info@mtcf.org](mailto:info@mtcf.org)** to learn more.

And please consider supporting the Women's Foundation of Montana through your year-end giving. **[Donate now!](#)**



## Women's Foundation AmeriCorps VISTA – Open Position

The WFM AmeriCorps VISTA will help build awareness of the Women's Foundation of Montana and support our work of helping Montana women and girls thrive.

Learn more [here](#).



**PowerHouse Montana**, an initiative of the Women's Foundation of Montana, is an online platform designed to connect Montana women to the mentors and resources they need to succeed. Learn more and sign up at [powerhousemt.org](http://powerhousemt.org).



## Support Montana Women and Girls!

*Together we can empower Montana women and girls to pursue their dreams.*

[Give Now](#)

## About the Women's Foundation of Montana

Established in 1999, the Women's Foundation of Montana is a program of Montana Community Foundation and on a mission to advance women's economic independence and create a brighter future for our girls. Learn more at [wfmontana.org](http://wfmontana.org).



MONTANA COMMUNITY FOUNDATION

Montana Community Foundation | 33 S Last Chance Gulch, Ste 2A, Helena, MT 59601

[Unsubscribe teal@mtcf.org](mailto:teal@mtcf.org)

[Update Profile](#) | [Constant Contact Data Notice](#)

Sent by [wfmontana@mtcf.org](mailto:wfmontana@mtcf.org) powered by



Try email marketing for free today!